

# SUNBELT CLASSIC MARKET LAMB AND GOAT SHOW

August 28-30, 2009  
Colquitt County AG COMPLEX  
Moultrie, GA  
TENTATIVE SCHEDULE

## FRIDAY August 28, 2009

12:00 PM BARN OPENS FOR EARLY ARRIVING LAMBS

## SATURDAY August 29, 2009

7:00 A.M- 9:00 AM LAMB Check In  
Showmanship Will Begin @ 11:00 A.M.  
LAMB SHOW WILL FOLLOW SHOWMANSHIP

## SUNDAY August 30, 2009

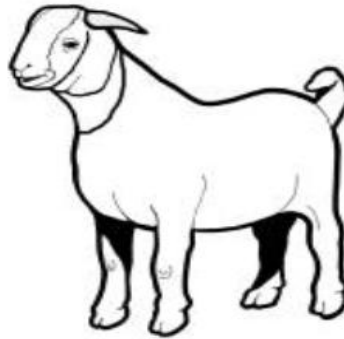
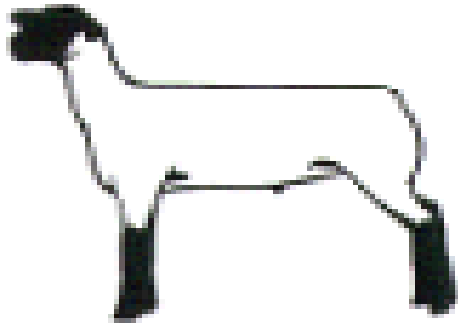
7:00 AM- 9:00 A.M GOAT Check In  
GOAT SHOWMANSHIP Will Begin @ 11:00 A.M.  
Goat Show Will Follow Showmanship

**No Goats in The Barn Until 5:00 P.M. Saturday UNLESS  
YOU HAVE SHEEP AND GOATS ENTERED IN THE  
SHOW!**

### MOTEL INFORMATION:

HAMPTON INN – 229-616-7777  
THE MOULTRIE INN – 229-890-2401  
COCOMO INN & SUITES – 229-985-2200  
BEST WESTERN (EXPO INN) – 229-890-8652

**Sunbelt Classic  
Market Lamb And Goat Show  
Colquitt County Ag Complex, Moultrie, Georgia  
August 28-30, 2009**



The 2009 Sunbelt Classic Market Lamb and Market Goats Show will be held Saturday August 29 and August 30, 2009 at the Colquitt County Ag Complex in Moultrie, GA

**Showmanship and Weight Class \* Paybacks will be Based on Number of Entries \*  
\* No Limit on Number of Entries**

**Sunbelt Classic Market Lamb and Goat Show  
2009**

1. The Sunbelt Classic show is open to 4H and FFA members as well as any pre-club age exhibitor from any state. **NO RAMS OR BUCKS!!**
2. All lambs and goats must have an official health certificate (health paper) according to Georgia Department of Agriculture Health Regulations. All lambs, goats and health certificates will be examined by a Georgia Department of Agriculture Health Inspector before entering the barn.
3. Entry fee will be \$15.00 per lamb for weight classes and \$10.00 per exhibitor for showmanship.
4. There will be no limit on the number of entries an exhibitor enters.

- 5. Showmanship will be divided into 3 groups. Showmanship will pay through third place.**
- 6. Exhibitors must show their own lamb or goat unless approved by the show committee. If an exhibitor has two lambs or goats in the same class, another registered exhibitor may show one of the lamb or goat. Ring men will be appointed by the Show Committee to help traffic the animals. No one will be allowed in the show ring except the judge, Ring Committee and one club member per animal, unless authorized by the Show Committee.**
- 7. We will not have a weigh-back. All lambs and goats will be weighed in at check-in by a show official.**
- 8. Show premiums will be handed out at the show.**
- 9. Sunbelt Classic will not be responsible for any losses or misfortunes.**
- 10. Generators may be necessary, feel free to bring one if you have one.**

Sunbelt Classic  
August 28-30,2009  
Colquitt County Ag Complex  
Moultrie, GA

Name \_\_\_\_\_ Grade \_\_\_\_\_  
Address \_\_\_\_\_  
Email \_\_\_\_\_ Phone \_\_\_\_\_

All Animals Must have an ID Ear Tag  
THIS IS AN APPROVED GCLPA POINTS SHOW!!  
**LAMB I.D. Please Include GCLPA #**

\_\_\_\_\_  
\_\_\_\_\_  
\_\_\_\_\_

**GOAT TAG #**

\_\_\_\_\_  
\_\_\_\_\_  
\_\_\_\_\_

**COST:**

\$15.00/HEAD X \_\_\_\_\_ HEAD = \$ \_\_\_\_\_ (IF RECIEVED BY AUGUST 14)

\$30.00/HEAD X \_\_\_\_\_ HEAD = \$ \_\_\_\_\_ (IF RECEIVED AFTER AUGUST 14)

\$10.00/EXHIBITOR SHOWMANSHIP = \$ \_\_\_\_\_

**TOTAL COST** \_\_\_\_\_

**FFA Teacher or Extension Agent Signature** \_\_\_\_\_

PLEASE MAKE CHECKS PAYABLE TO MOULTRIE JACKPOT.

**ALL ENTRIES SHOULD BE RECEIVED BY AUGUST 14, 2009.**

ALL LATE ENTRIES \$30.00/HEAD. ONE ENTRY FORM PER EXHIBITOR, PLEASE. MODIFY FORM AS NEEDED. ANY QUESTIONS AND CONCERNS

**CONTACT:**

MATT HOWELL-229-921-6537

JASON WEAVER-229-873-8954

LARRY VARNADOE-229-873-2359.

**MAIL TO:**

**SUNBELT CLASSIC**

**C/O JASON WEAVER**

**127 WEST BROAD ST**

**NORMAN PARK, GA 31771**