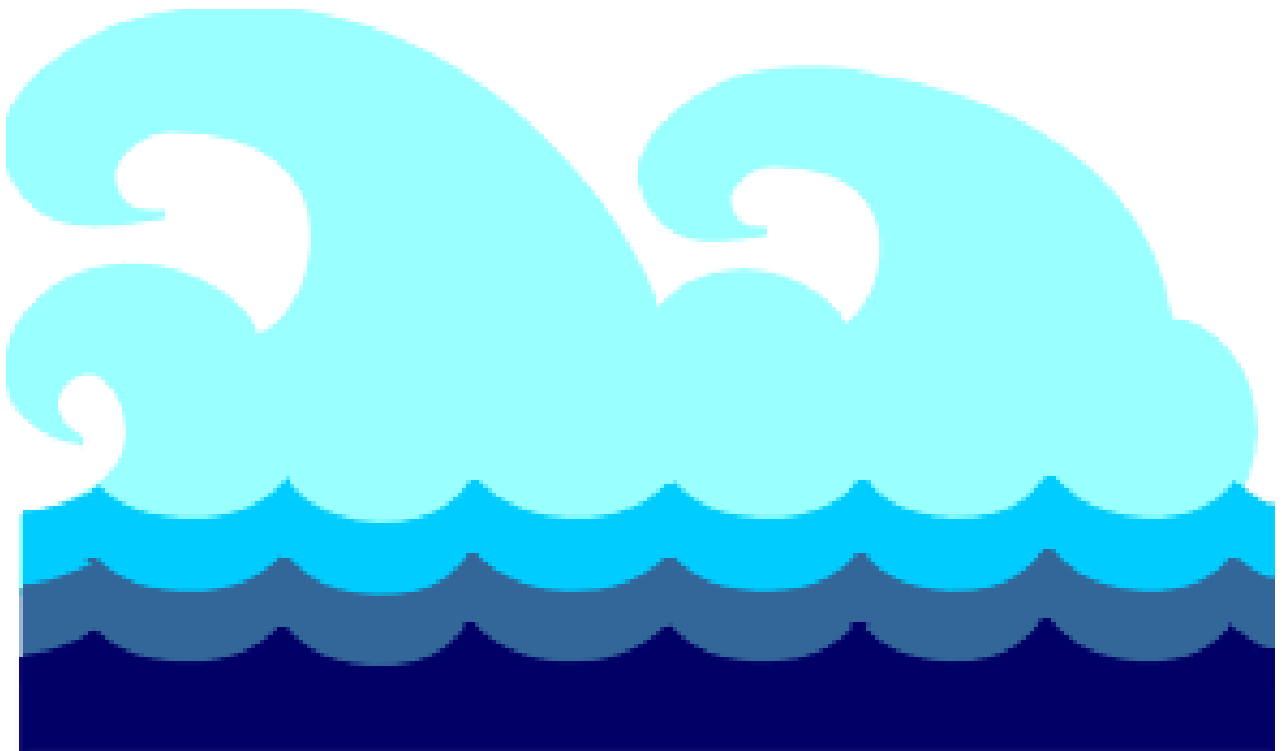


# Distribution of Water on Earth



**Ocean Water –  
97.2%**



**Glaciers and  
other ice:  
2.15%**

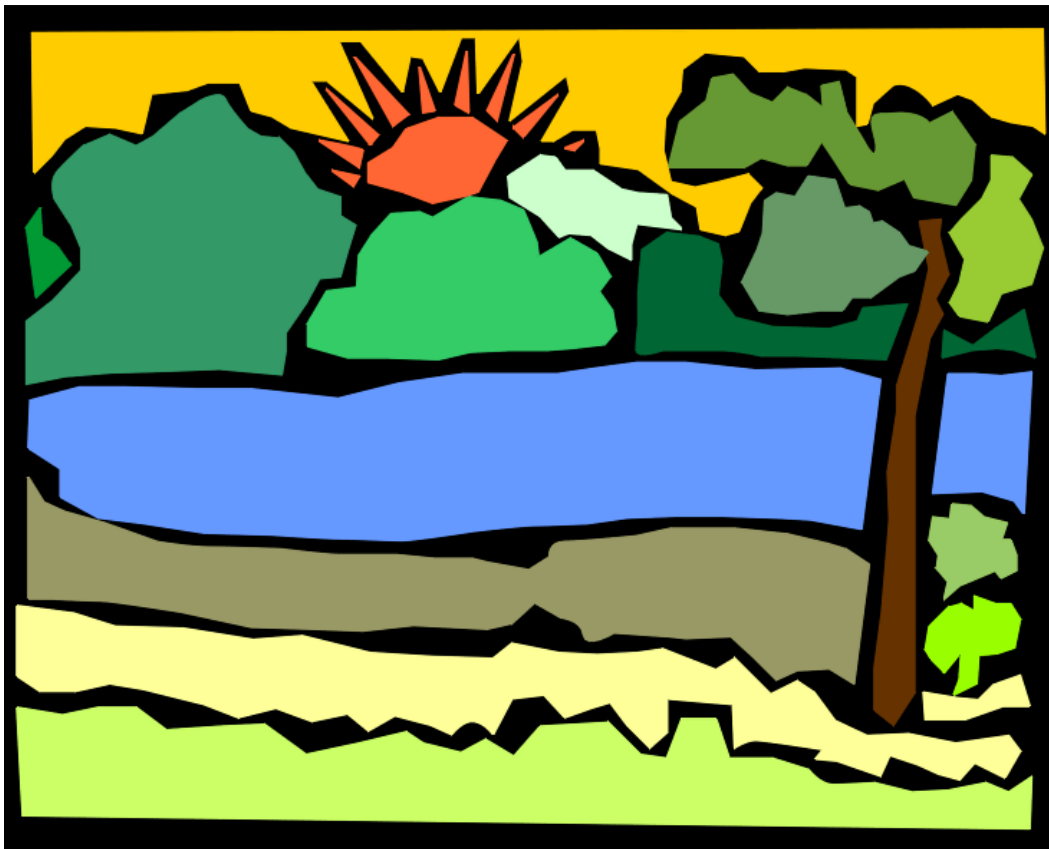


**Ground water:**

**0.61%**



**Fresh water  
lakes: 0.009%**



**Inland seas:  
0.008%**



# Soil Moisture: 0.005%



**Atmosphere:  
0.001%**



**Rivers:  
0.0001%**

